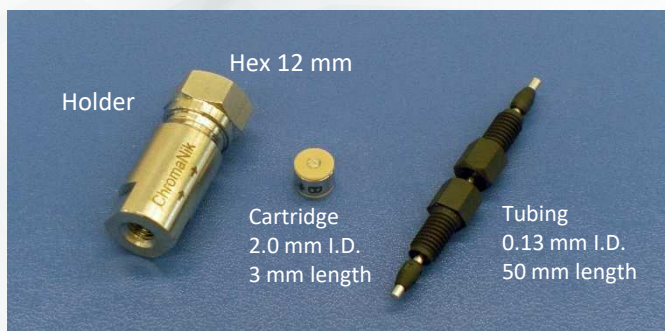


SunShell Guard Cartridge Column



RP & S GUARD CARTRIDGE COLUMN

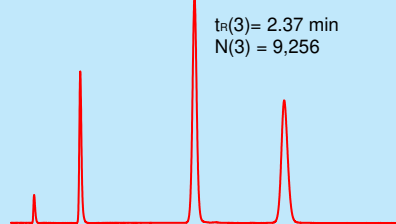


- * The cartridge column is packed with SunShell C18 (RP) and Core shell silica (S) into a cartridge sized 3 x 2 mm i.d.
- * RP guard cartridge is used for all reversed phases and S guard cartridge for hilic phases.
- * Low dead volume structure
- * Upper pressure limit is more than 60 Mpa
- * Available for 2.1 mm i.d. to 4.6 mm i.d. columns

SunShell C18, 2.6 μ m 50 x 2.1 mm

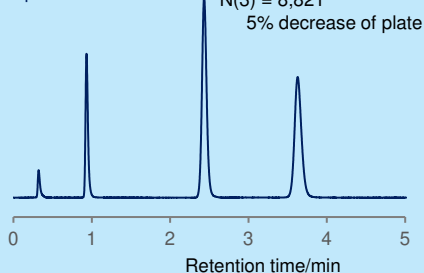
Without Guard Cartridge column

Back pressure: 10.2 MPa



With Guard Cartridge Column RP

Back pressure: 10.5 MPa



Mobile phase:

CH₃CN/H₂O=60/40 for 2.1 mm i.d.

CH₃CN/H₂O=70/30 for 4.6 mm i.d.

Flow rate:

0.3 mL/min for 2.1 mm i.d.

1.8 mL/min for 4.6 mm i.d.

Temperature: 25 °C

Detection: UV@250nm

Sample: 1 = Uracil

2 = Ethylbenzoate

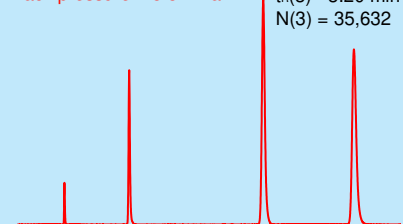
3 = Acenaphthene

4 = Butylbenzene

SunShell C18, 2.6 μ m 150 x 4.6 mm

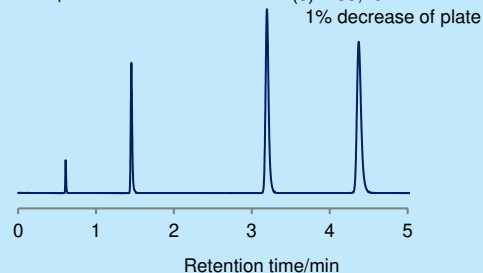
Without Guard Cartridge column

Back pressure: 28.8 MPa



With Guard Cartridge Column RP

Back pressure: 31.4 MPa



Ordering Information of SunShell Guard Cartridge Column

Description	Part number
SunShell Guard Cartridge RP Starter Kit (holder, cartridge, tubing)	CB32CK
SunShell Guard Cartridge RP for exchange (2 PCS)	CB32CC
SunShell Guard Cartridge S Starter Kit (holder, cartridge, tubing)	CS32CK
SunShell Guard Cartridge S for exchange (2 PCS)	CS32CC
SunShell Guard Cartridge holder	HOL2CC